



*Rescuing a dog means more than saving a life;
it's about giving love a second chance.*

Support Queen's Ranch dog rescue and be part of this beautiful mission.

Duette, Florida

Mission

Our mission is to build a compassionate rescue center dedicated to providing a safe haven for dogs and farm animals in need. Our program focuses on rescuing, rehabilitating, and rehoming animals, while also promoting animal welfare education and advocating for responsible pet ownership.

Vision

The vision for Queen's Ranch is to create a self-sustaining dog rescue, where a portion of the funds for the care of the animals will be generated through the rental of our barn-style venue for weddings and events. This unique approach ensures that the rescue can consistently provide for the dogs while offering a beautiful space for special occasions, all in support of a meaningful cause.



Characteristics of QUEEN's Ranch Dog Rescue: _____

-  **Self-Sustaining Dog Rescue:** Queen's Ranch will operate as a self-sufficient dog rescue, primarily supported by renting out a wedding and event venue.
-  **Dog Training Facility Rental:** Trainers will be able to rent the training area to bring their dogs, generating additional income for the ranch.
-  **Capacity to Care for 100 Dogs:** The ranch will have the facilities to house and care for up to 100 dogs at any given time.
-  **Medical Care and Surgery for Dogs:** The ranch will provide essential medical services, including surgeries and treatments, for dogs in need.
-  **Sponsor-a-Dog Program:** Allow people to sponsor specific dogs with recurring donations, offering perks like updates, visits, and the opportunity to participate in their adoption journey.
-  **Specialized Care for Dogs with Unique Needs:** Queen's Ranch will also focus on providing specialized treatments for dogs requiring extra care.
-  **Discounted/Free Medications for Low-Income Families:** The ranch will offer discounted or free medications and flea treatments to families in financial need.
-  **Weekly Farmers Market:** A farmers market will continue to operate every weekend, offering fresh produce in exchange for donations.
-  **Queen's Trunk Store:** The on-site store, "Queen's Trunk," will offer items with suggested donation values rather than set prices due to agricultural zoning restrictions. Items will be tagged with statements like, "Recommended donation value is...".
-  **Photography Rental Stations:** Ten themed photoshoot stations will be available for hourly rentals, providing another stream of income to support the ranch.
Photography Venue for Pet Shoots: we will partner with local photographers to use the property for pet photography sessions. Accept donations in exchange for use of the beautiful, natural backdrop for their photos.
-  **Adopt-a-Tree or Plant Program:** Create a donation-based "Adopt-a-Tree" program where supporters can plant a tree or vegetable plant, contributing to your agricultural efforts and receiving a plaque or recognition.



PHASE ONE: _____

- ✓ **Purchase Land** - \$350k
- ✓ **Purchase Lawn Mower**- \$3k
- 🕒 **Make and Install pavers** to be placed underneath the roofing area - \$5k
- 🕒 **Design blue print of the 5.5 acres with architects**
- 🕒 **Put together a green house** - 2k
- ✗ **Beautify Queen's Ranch** with plants, flowers fruits and veggies.
Cost to do flower beds - \$3.5k
- ✗ **Build Photoshoot Props** - Total of 10 - \$5k
- ✗ **Develop a farmers market** to increase income and visibility through Social Media posts. Cost of Social Media exposure - 2.5k for 3 months of boosts
- ✗ **Build a training area for dogs** (obstacles, stairs, etc) to create income through rental of the facility. Cost 5k
- ✗ **Sell pavers:** regular bricks, 16" x 16" and stepping stones on shapes of paw prints, hearts and flowers with glow in the dark stones mixed in the concrete so we can create income

PHASE TWO: _____

- ✗ **Buy a restroom with washing hand station** - \$5K + Installation
- ✗ **Install a bigger well** - 150 ft deep so we can irrigate the whole area.
Cost: 33k
- ✗ **Install irrigation system around the whole perimeter of the land.**
Approximately estimated cost 25k
- ✗ **Purchase 120 Cypress Italian trees** to cover the perimeter of Queen's Ranch.
Cost of trees with shipping \$3,500 + volunteers
- ✗ **Process all permits** for construction approval by Manatee County

- ✓ Done
- 🕒 In Process
- ✗ Not started yet

PHASE THREE:

- ⊘ **Construction Cost:** \$1M - fulfilled from different grants, donations and monthly subscriptions
- ⊘ **Construction begins** - Wedding venue, Dog rescue, Vet area and 5 efficiencies for Volunteers
- ⊘ **Ideal amount of cash to support 100 dogs in a yearly basis** - 1M placed in the Stock Market.

CURRENT PIC OF QUEEN'S RANCH AS OF OCTOBER, 2024



PROPOSED DISTRIBUTION OF LAND



PROPOSED EXTERIOR VISUALS

Firepit



Green House



Queen's Trunk (STORE)



Bride's Headquarters



Barn Event Venue



Pavers sitting area





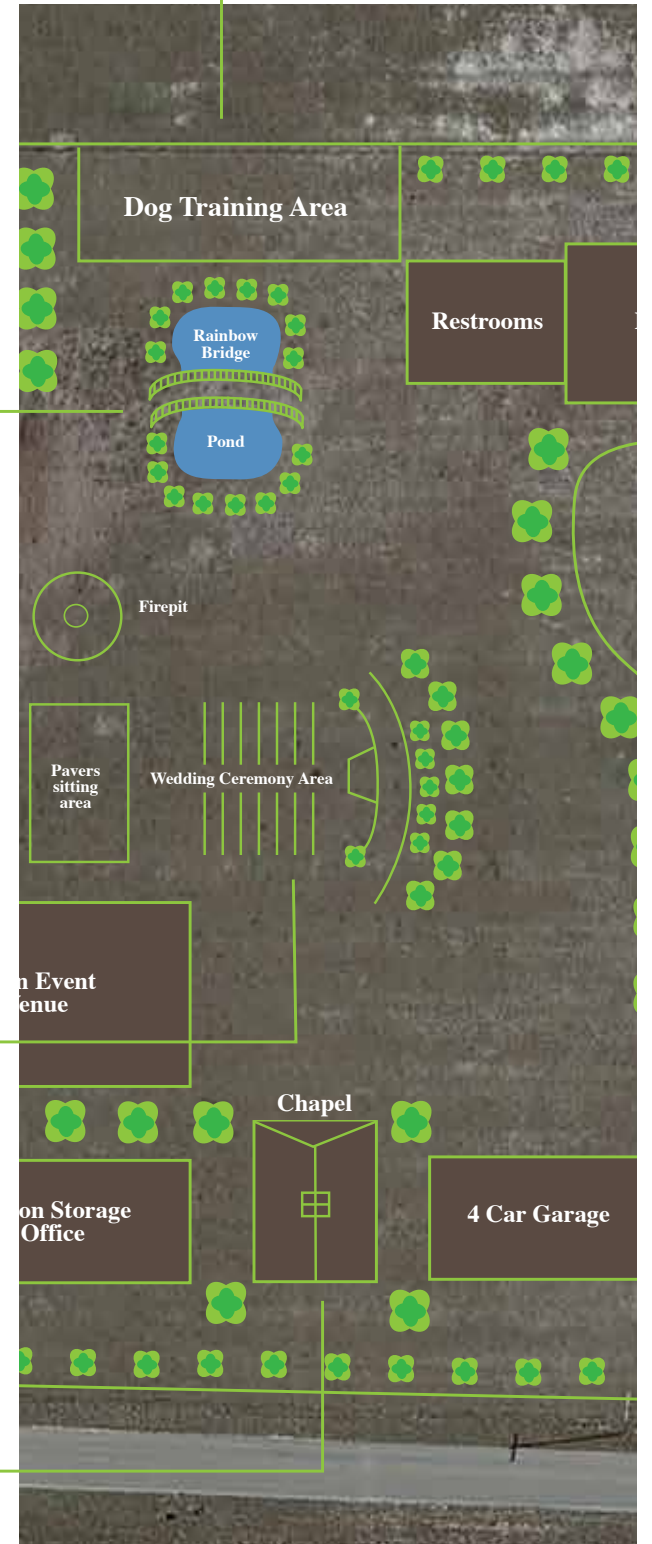
Rainbow Bridge



Dog Training Area



Pond - Pool



Wedding Ceremony Area



Chapel

4 Car Garage





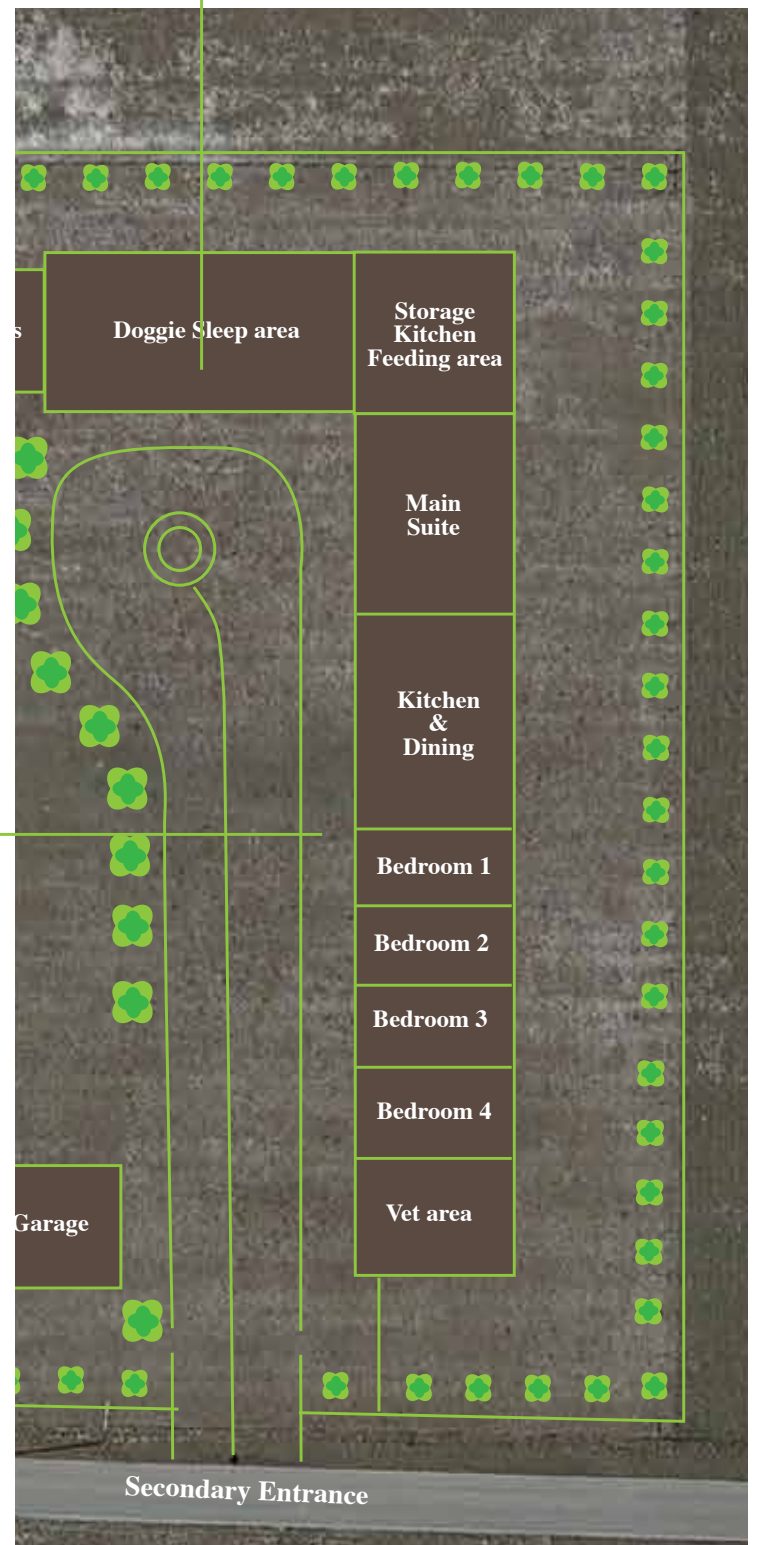
Doggie Sleep area

Main Suite



Kitchen & Dining

Vet area





THANK YOU

